

NORTHERN SPIRIT

BY **COACHMEN**



A FOREST RIVER® BRAND

CAMPING SIMPLIFIED.



**NORTHERN
SPIRIT**

NORTHERN SPIRIT HAS THE RIGHT FEATURES IN THE RIGHT PLACES TO MAKE YOUR CAMPING EXPERIENCE MORE ENJOYABLE. WELL DESIGNED STORAGE SPACES PROVIDE EASY ACCESS TO EVERYTHING.



3070BH



NORTHERN SPIRIT

FOR THOSE WHO WANT TO GET OUT AND CAMP.

ULTRA LITE FLOORPLANS



1943RB



2353RB



2457BH



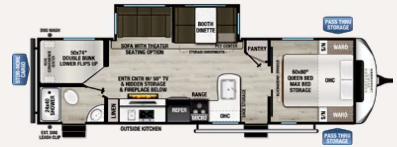
2557RB



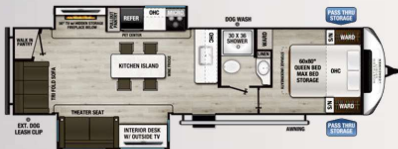
2560RK



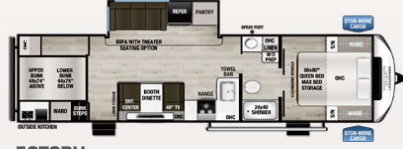
2565FK



2963BH



2975RL



3070BH



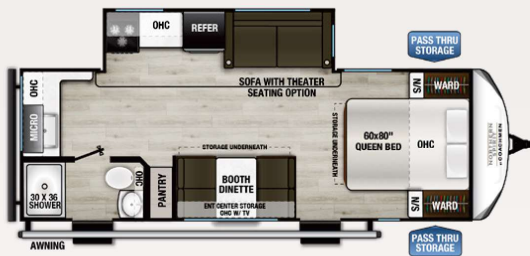
3080BH

ULTRA LIGHT SPECIFICATIONS	1943RB	2353RB	2457BH	2557RB	2560RK	2565FK	2963BH	2975RL	3070BH	3080BH
Hitch Weight	520	640	796	648	738	868	982	900	856	TBD
Carrying Capacity	1,574	1,508	1,838	1,758	1,620	1,430	2,144	2,104	1,962	TBD
UVW	4,926	5,492	5,958	5,842	6,118	6,400	6,856	7,658	7,038	TBD
GVWR	6,500	7,000	7,796	7,600	7,738	7,868	9,000	9,800	9,000	TBD
Ext. Length	24' 0"	25' 11"	29' 11"	29' 3"	29' 9"	29' 8"	34' 0"	35' 11"	36' 9"	TBD
Ext. Height	11' 1"	11' 3"	11' 3"	11' 1"	11' 3"	11' 1"	11' 2"	11' 5"	11' 3"	TBD
Ext. Width	96"	96"	96"	96"	96"	96"	96"	96"	96"	TBD
Awning Length	15'	16'	20'	18'	20'	18'	18'	20'	20'	TBD
Fresh Water Capacity (gal.)	50	50	50	50	50	50	50	50	50	TBD
Gray Water Capacity (gal.)	35	35	70	70	70	70	35	35	35	TBD
Waste Water Capacity (gal.)	35	35	35	35	35	35	35	35	35	TBD

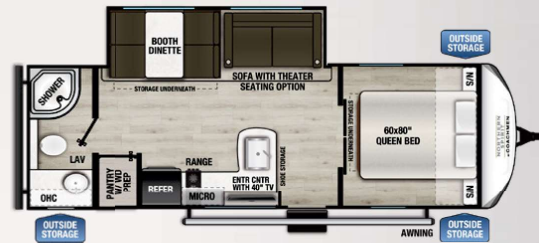


NORTHERN SPIRIT'S NEWEST SEGMENT DELIVERS ALL OF THE ESSENTIAL FEATURES, FLOORPLANS, AND CONSTRUCTION WITHOUT BREAKING THE BANK.

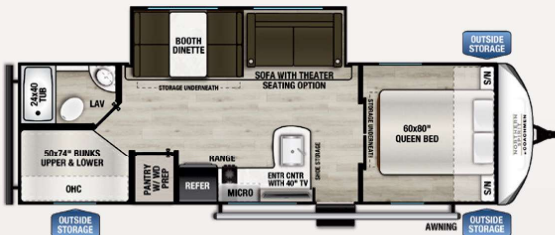
SE FLOORPLANS



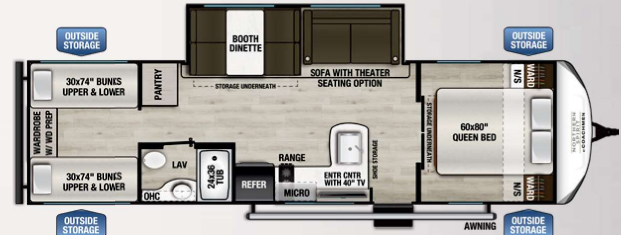
20MD



24RB



26BH



29BH

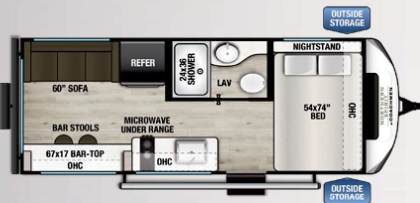
SE SPECIFICATIONS	20MD	24RB	26BH	26BH
Hitch Weight	TBD	584	694	864
Carrying Capacity	TBD	1,695	1,709	1,739
UVW	TBD	5,305	5,641	6,125
GVWR	TBD	7,000	7,350	7,664
Ext. Length	TBD	29' 1"	30' 11"	33' 7"
Ext. Height	TBD	10' 10"	10' 11"	10' 11"
Ext. Width	TBD	96"	96"	96"
Awning Length	TBD	14'	20'	16'
Fresh Water Capacity (gal.)	TBD	50	50	50
Gray Water Capacity (gal.)	TBD	35	35	35
Waste Water Capacity (gal.)	TBD	35	35	35



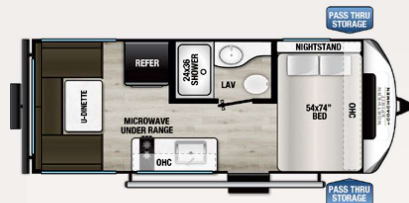
NORTHERN SPIRIT

LIGHTEN THE LOAD AND CONQUER THE ROAD WITH NORTHERN SPIRIT BIJOU.

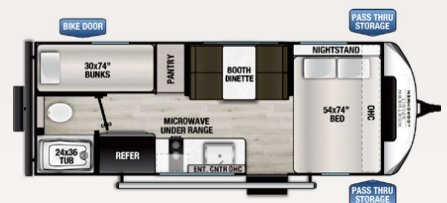
BIJOU FLOORPLANS



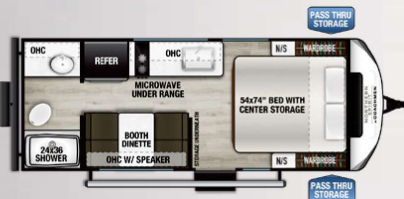
15RLB



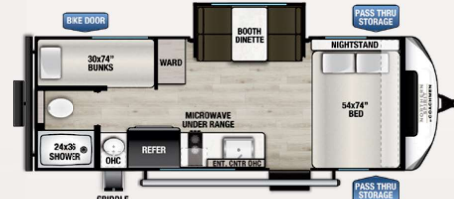
16RDB



17BHB



18RBB



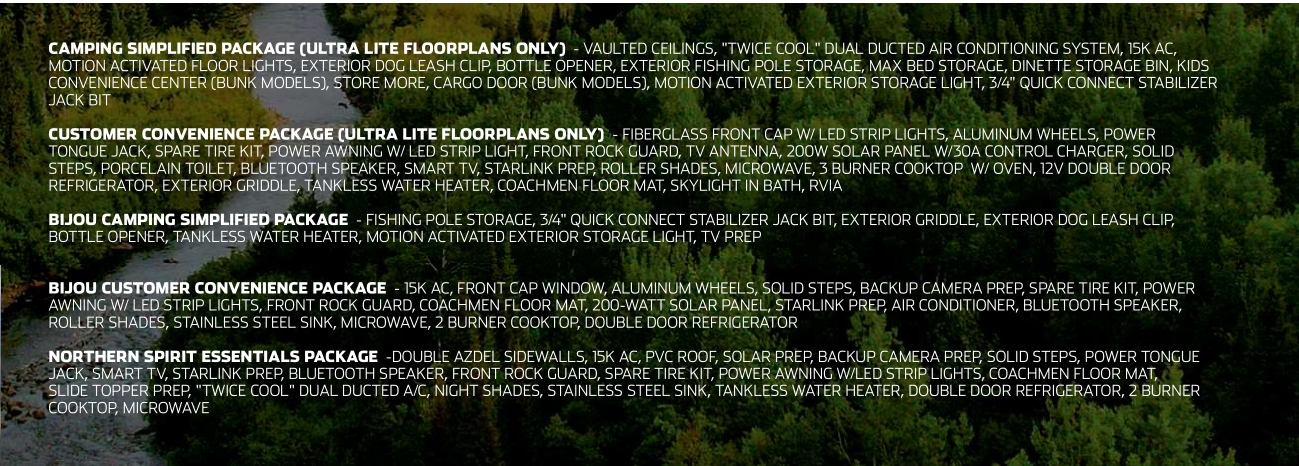
19BHB

BIJOU SPECIFICATIONS	15RLB	16RDB	17BHB	18RBB	19BHB
Hitch Weight	472	396	332	308	393
Carrying Capacity	1,180	1,392	1,134	1,397	1,176
UVW	3,220	3,008	3,266	3,003	3,617
GVWR	4,400	4,400	4,400	4,400	4,793
Ext. Length	21' 4"	20' 11"	21' 9"	20' 10"	22' 11"
Ext. Height	9' 10"	9' 10"	9' 10"	9' 10"	9' 11"
Ext. Width	84"	84"	84"	84"	84"
Awning Length	14'	14'	14'	12'	15'
Fresh Water Capacity (gal.)	50	50	50	50	50
Gray Water Capacity (gal.)	35	35	35	35	35
Waste Water Capacity (gal.)	35	35	35	35	35



15RLB





CAMPING SIMPLIFIED PACKAGE (ULTRA LITE FLOORPLANS ONLY) - VAULTED CEILINGS, "TWICE COOL" DUAL DUCTED AIR CONDITIONING SYSTEM, 15K AC, MOTION ACTIVATED FLOOR LIGHTS, EXTERIOR DOG LEASH CLIP, BOTTLE OPENER, EXTERIOR FISHING POLE STORAGE, MAX BED STORAGE, DINETTE STORAGE BIN, KIDS CONVENIENCE CENTER (BUNK MODELS), STORE MORE, CARGO DOOR (BUNK MODELS), MOTION ACTIVATED EXTERIOR STORAGE LIGHT, 3/4" QUICK CONNECT STABILIZER JACK BIT

CUSTOMER CONVENIENCE PACKAGE (ULTRA LITE FLOORPLANS ONLY) - FIBERGLASS FRONT CAP W/ LED STRIP LIGHTS, ALUMINUM WHEELS, POWER TONGUE JACK, SPARE TIRE KIT, POWER AWNING W/ LED STRIP LIGHT, FRONT ROCK GUARD, TV ANTENNA, 200W SOLAR PANEL W/30A CONTROL CHARGER, SOLID STEPS, PORCELAIN TOILET, BLUETOOTH SPEAKER, SMART TV, STARLINK PREP, ROLLER SHADES, MICROWAVE, 3 BURNER COOKTOP W/ OVEN, 12V DOUBLE DOOR REFRIGERATOR, EXTERIOR GRIDDLE, TANKLESS WATER HEATER, COACHMEN FLOOR MAT, SKYLIGHT IN BATH, RVIA

BIJOU CAMPING SIMPLIFIED PACKAGE - FISHING POLE STORAGE, 3/4" QUICK CONNECT STABILIZER JACK BIT, EXTERIOR GRIDDLE, EXTERIOR DOG LEASH CLIP, BOTTLE OPENER, TANKLESS WATER HEATER, MOTION ACTIVATED EXTERIOR STORAGE LIGHT, TV PREP

BIJOU CUSTOMER CONVENIENCE PACKAGE - 15K AC, FRONT CAP WINDOW, ALUMINUM WHEELS, SOLID STEPS, BACKUP CAMERA PREP, SPARE TIRE KIT, POWER AWNING W/ LED STRIP LIGHTS, FRONT ROCK GUARD, COACHMEN FLOOR MAT, 200-WATT SOLAR PANEL, STARLINK PREP, AIR CONDITIONER, BLUETOOTH SPEAKER, ROLLER SHADES, STAINLESS STEEL SINK, MICROWAVE, 2 BURNER COOKTOP, DOUBLE DOOR REFRIGERATOR

NORTHERN SPIRIT ESSENTIALS PACKAGE - DOUBLE AZDEL SIDEWALLS, 15K AC, PVC ROOF, SOLAR PREP, BACKUP CAMERA PREP, SOLID STEPS, POWER TONGUE JACK, SMART TV, STARLINK PREP, BLUETOOTH SPEAKER, FRONT ROCK GUARD, SPARE TIRE KIT, POWER AWNING W/LED STRIP LIGHTS, COACHMEN FLOOR MAT, SLIDE TOPPER PREP, "TWICE COOL" DUAL DUCTED A/C, NIGHT SHADES, STAINLESS STEEL SINK, TANKLESS WATER HEATER, DOUBLE DOOR REFRIGERATOR, 2 BURNER COOKTOP, MICROWAVE



**24/7 EMERGENCY
ROADSIDE ASSISTANCE
WITH VEHICLE PURCHASE***

- | | |
|----------------|-----------------|
| TOWING | WINCH-OUT |
| JUMP-STARTS | MOBILE MECHANIC |
| TIRE CHANGES | TECHNICAL |
| FLUID DELIVERY | SUPPORT |
| LOCKOUT | DEALER LOCATOR |
| SERVICE | SERVICES |



*VALID FOR 1 YEAR FROM DATE OF PURCHASE



PRE-DELIVERY INSPECTION FACILITY

20,000 square feet of quality assurance. The bare essentials for a premium product. This state-of-the-art facility gives immediate daily feedback to production for quality assurance in every unit built.



To learn more about Coachmen RV and our products and see how Coachmen is making the easy life easier, visit www.coachmenrv.com.



YOUR NORTHERN SPIRIT DEALER



Check out the Northern Spirit website



All information contained in this brochure is believed to be accurate at the time of publication. However, during the model year, it may be necessary to make revisions and Forest River, Inc., reserves the right to make all such changes without notice, including prices, colors, materials, equipment and specifications as well as the addition of new models and the discontinuance of models shown on this poster. Therefore, please consult with your Coachmen Inc., dealer and confirm the existence of any materials, design or specifications that are material to your purchase decision. © 2024 Northern Spirit by Coachmen RV, a division of Forest River Inc., a Berkshire Hathaway company, All right reserved 02/24

www.coachmenrv.com/northernspirit